

# THE MENU OF COLORS

A cocktail menu inspired by the captivating phenomenon of light refraction. When white light passes through a prism, it reveals a full spectrum of colors – the same colors that dance across our skies at twilight or the auroras. Each cocktail in this collection embodies a different hue born from that spectrum, reimagined through its connection to the ever-changing sky.



## LUMINAIR X LYNN SPOOR

This menu is a bold expression of LuminAir's elevated approach to mixology, brought to life through a vibrant collaboration with contemporary artist Lynn Spoor. Known for her dynamic brushwork and powerful compositions, Lynn's signature energy flows through the painting. The featured painting above complements each of our signature cocktails. Take a closer look at the painting – located near the main bar & terrace entrance – and uncover the bursts of color embedded in each stroke.

## RED MOON



FRESH | FRUITY | BUBBLES

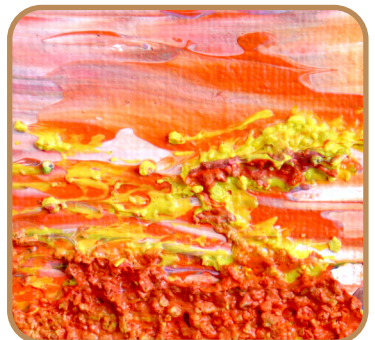
### Tequila | Mezcal

The Lost Explorer Espadín  
Código 1530 | **Strawberry**  
Rhubarb | Sichuan Pepper  
21

### Zero

Fluère Smoked Agave | **Strawberry**  
Rhubarb | Sichuan Pepper  
15

## GOLDEN HOUR



COMFORT | SWEET | FOAMY

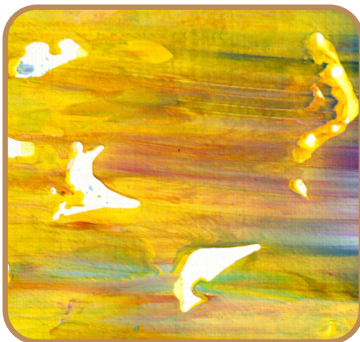
### Scotch Whisky

The Dalmore 12 | Adriatico Amaretto  
**Apricot** | Honey | Crème Brûlée  
21

### Zero

Amaretto Adriatico Zero  
**Apricot** | Honey | Crème Brûlée  
15

## HALO



CREAMY | BRIGHT | SWEET

### Rum

Flor de Caña 12yr | Perrier  
**Meringue** | Yuzu | Saffron  
21

### Zero

Rumamis | Perrier  
**Meringue** | Yuzu | Saffron  
15

*\*Meringue contains egg white*

## HORIZON

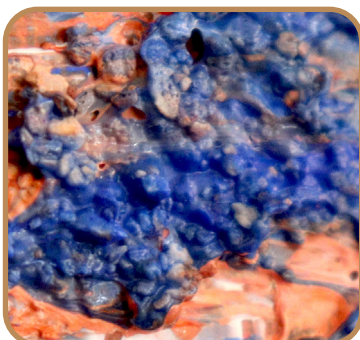


UMAMI | COMPLEX | SPICY

### Bourbon

Woodford Reserve  
**Wasabi** | Soy | Avocado | Gari  
21

## CLEAR

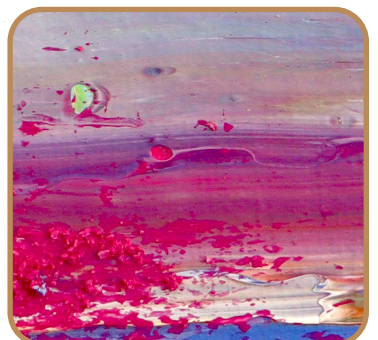


ELEGANT | TROPICAL | CLEAN

### Vodka | Champagne

Absolut Elyx | **Pommery Brut Apanage**  
Lychee | Pineapple | Coconut  
24

## TWILIGHT



TANGY | FLORAL | SMOOTH

### Gin

Monkey 47 | Four Pillars Bloody Shiraz  
**Grape** | Flower Bouquet  
20

All prices shown are in euros

For those with special dietary requirements or allergies who would like to know more about the ingredients used, please ask a Team Member for more information.

# THE CLASSICS BY COLOR

## NEGRONI

BITTER | BOLD | **RED**

Beefeater | Martini Special Riserva Rubino | Campari  
21

## PORNSTAR MARTINI

FRUITY | SWEET | **ORANGE**

Absolut | Passoa | Passion Fruit | Vanilla Tonka  
21

## WHISKEY SOUR

SOUR | CREAMY | **YELLOW**

Bulleit Bourbon | Lemon Juice | Sugar  
21

## BASIL SMASH

HERBAL | CITRUSY | **GREEN**

Beefeater | Fresh Basil | Lemon Juice  
21

## MARTINI

CRISP | CLEAN | **BLUE**

Absolut or Beefeater | Martini Special Riserva Ambrato  
Olives or Lemon Twist  
20

## MAI TAI

TIKI | NUTTY | **PURPLE**

LuminAir Rum Mix | Cointreau Orange Liqueur  
Orgeat | Lime Juice  
20

All prices shown are in euros

For those with special dietary requirements or allergies who would like to know more about the ingredients used, please ask a Team Member for more information.